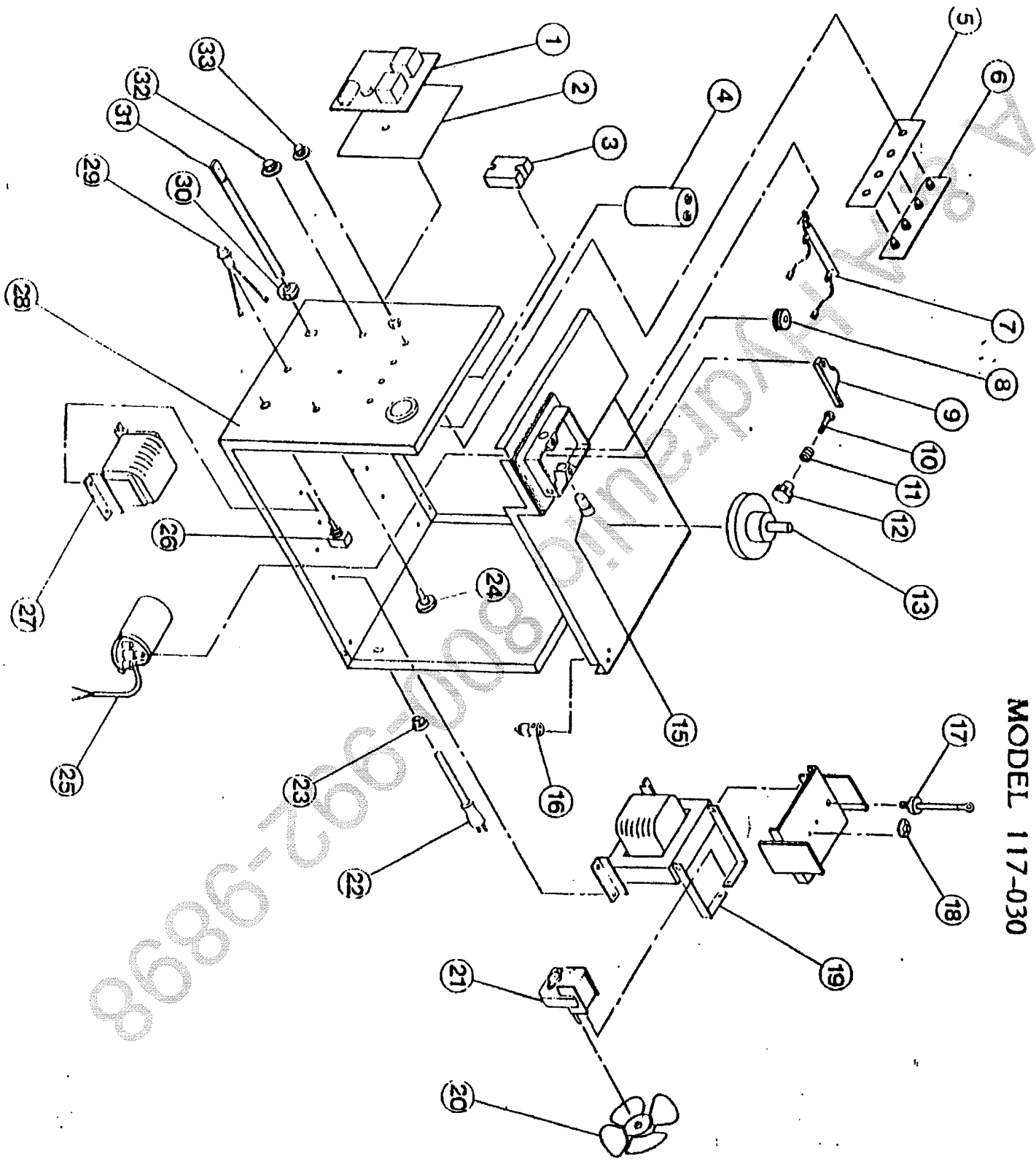


117-030, WFWM, WS120

REPLACEMENT PARTS LIST
120 VOLT MIG WELDER
MODEL 117-030



1-800-989-9898

117-030, WFWM, WS120

Item	Lincoln Stock #	Customer #	Description
1		860-573-000	Circuit board w/ potentiometer
2		541-084-000	Insulation
3	216-055-666	216-055-666	Triac Relay, 40 amp
4	213-018-666	213-018-200	Capacitor, 45,000mf, 45Vdc
5		541-067-000	Insulation
6		860-489-666	Spot Stitch PCB
7		860-523-000	Resistor assy., 25Ω, 50 watt
8	310-122-500	4323	Drive roller, 0.024 / 0.030 / 0.035
	860-616-002	4324	Drive roller, teflon
9		310-123-000	Tension bar w/bearing
10		246-114-000	Stud w/groove
11		330-025-000	Spring
12		246-160-000	Tension knob
13	312-066-666	312-066-666	Spindle
15		410-325-000	Inlet guide tube
16	246-086-666	246-086-666	Gas solenoid, 18-24Vdc
17	860-476-666	860-476-666	Diode assy.
18		216-053-000	Thermostat
19		860-799-888	Main weld transformer

Model	Primary Input	Input Plug	Duty Cycle at Rated Output
117-030	120V, 15A	15A	20%

Item	Lincoln Stock #	Customer #	Description
20		316-009-100	Fan blade
21	216-087-666	216-070-000	Fan motor
22		248-182-000	Power cord
23		541-020-000	Strain relief
24		246-104-000	5 position heat switch
25	216-079-666	860-581-100	Drive motor, 24Vdc
26		216-044-100	Power Switch, 230Vac, 40 amp
27		860-572-888	Reactor coil
28		711-159-020	Faceplate
29		245-085-000	Indicator light
30		541-057-000	Strain relief
31		238-116-000	Ground Cable
32	246-041-666	246-140-000	Knob, 1.5"
33		246-107-000	Knob, 1 3/16"
		246-139-000	Knob, 1 3/16"
Not Shown			
34	238-155-000	4320	Mig gun assembly, 10'
35	334-286-666	334-286-666	Gas regulator
36	059-245-666		Gas hose
37	880-070-888		Control Transformer

Rated Output	Voltage Settings	Agency Listing	Max Output
90 amps	5	None	90 amps