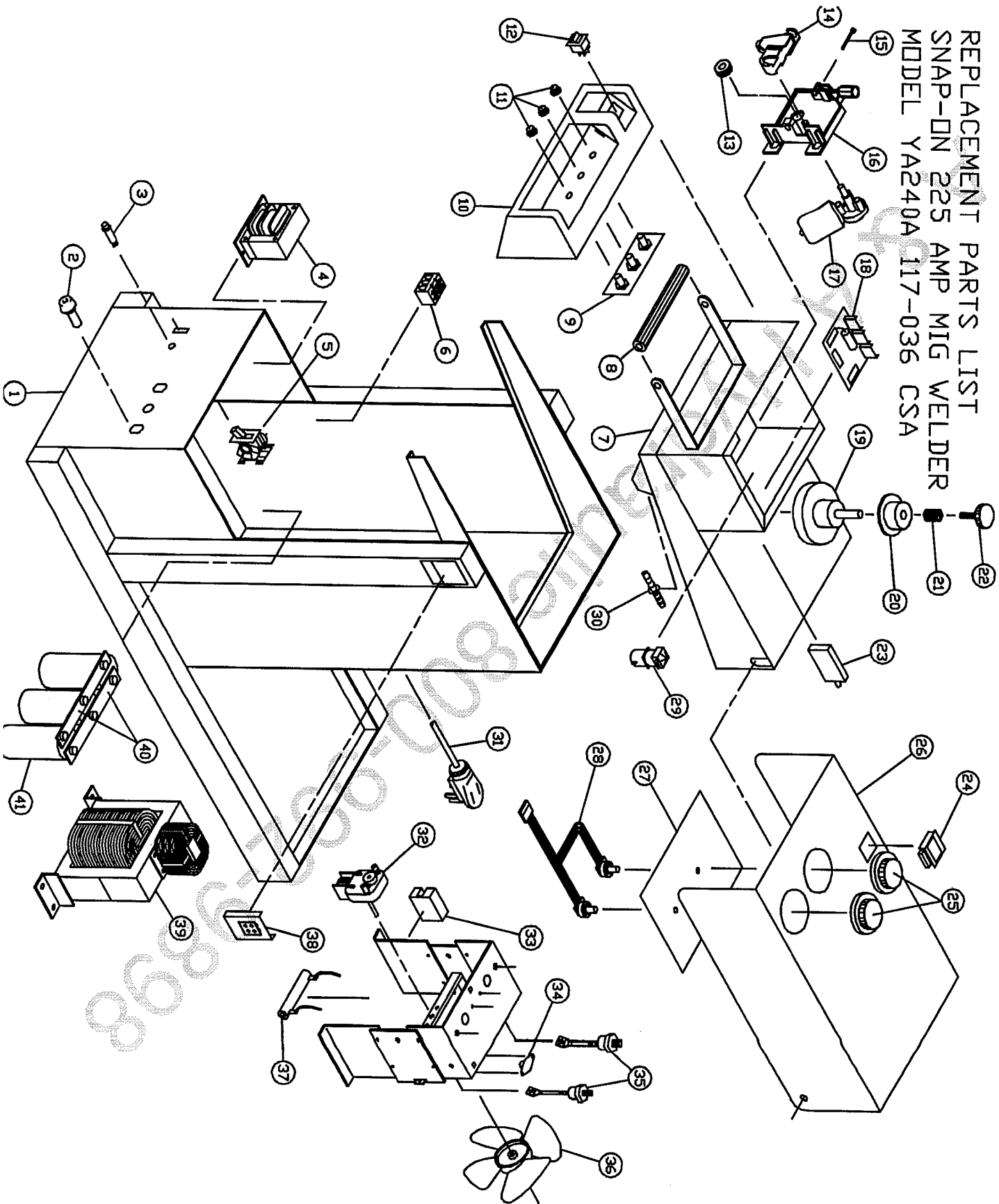


117-036, YA240A

REPLACEMENT PARTS LIST
SNAP-ON 225 AMP MIG WELDER
MODEL YA240A 117-036 CSA



117-036, YA240A, 225 Amp Mig

Item	Lincoln Stock #	Customer #	Description
1		410-595-030	Front panel
2	312-045-666	312-045-666	Receptacle assy.
3		245-095-666	Power Light
4		860-817-888, 880-041-888	Control Transformer, 230Vac to 24Vdc, 6 amp
5	216-010-666	216-010-666	Power switch
6		239-057-666	Terminal block
7		880-045-666	Undercarriage assy.
8		246-161-666	Handle
9	880-114-666	880-114-666	Spot/Stitch circuit board
10		860-983-666	Molded nose
11		246-127-666	Knob 1"
12		216-077-666	Paddle switch
13	310-122-500	4323	Drive roller, 0.025 / 0.030 / 0.035
	860-616-002	4324	Aluminum driver roller
14		880-111-666	Tensioner assy.
15		239-123-666, 239-208-000	Inlet guide tube
16	880-130-666	880-130-666	Drive base assy kit
17	216-079-666	216-079-666	Drive motor/gearbox
18	880-113-666	880-113-666	Main circuit board assy
19	312-066-666	312-066-666	Spindle/tension kit
20	312-110-666	312-110-666	Spool adaptor
21	312-066-666	330-029-666	Tension spring (see #19)
22	312-066-666	246-215-666	Tension knob (see #19)
23		246-365-000	Circuit breaker for drive motor
24		312-042-666	Slide switch
25		246-158-666	Knob 2 3/4"
26		880-240-666	Hood
27		410-516-026	Drive box cover
28	880-052-666	860-936-666	Heat/Wire speed harness w/pots
29	246-086-666	246-212-666	Gas Solenoid
30		253-047-666	Hose barb fitting
31		246-178-666	Power Cord, 8/3
32	216-099-666	216-085-666	Fan motor
33	216-062-666	216-062-666	Triac relay

Item	Lincoln Stock #	Customer #	Description
34	216-053-666	216-053-666	Thermostat
35	244-070-666	244-070-666	Diode (each)
36		316-010-000	Fan blade
37		880-158-666	Resistor assy.
38		860-832-666	Drive head lock
39		880-050-888	Transformer
40		412-202-666	Bus bar
41	213-018-666	213-018-666	Capacitor
Not Shown			
--	334-303-001	334-303-001	Gas regulator
--	059-245-666	059-245-666	Gas hose
--		238-009-500	Ground cable w/plug & clamp, 12"
--	239-292-666	41001	Ground clamp only
--		413-047-666	Rear wheels
--		413-041-666	Front caster
--		238-193-000	Polarity jumper cable assy
--	238-393-000	4365	Complete gun assy 12ft
--	238-296-666	238-296-666	Complete gun assy 15ft
--	KP44-3545-15	334-375-000, 4370, KP1933-1	Gun steel liner
--	KP42N-3545-15	334-376-000, 4368, KP1955-1	Gun teflon liner
--	334-363-000	334-363-000	Gun gas diffuser
--	334-252-000	334-252-000	Gun conductor Tube
--	334-255-000	334-255-000	Gun trigger (96KL-R)
--		334-253-000	Gun handle cap (250-86C)
--		084-019-000	Liner set screw #8-32 X 1/8"
--		334-254-000	Handle case (90206)
--	KP21T-50	4348	Steel welding nozzle
--	KP21-62FAS	4329	Spot welding nozzle
--	KP21T-62	4330	Aluminum welding nozzle
--	KP11-25	4309	0.025 contact tip
--	KP11-30	4310	0.030 contact tip
--	KP11-35	4311	0.035 contact tip
--	KP11-45	4339	0.045 contact tip

Model	Primary Input	Input Plug	Duty Cycle at Rated Output
117-036	208/230V, 44A/40A	50A, 50-P	60%

Rated Output	Voltage Settings	Agency Listing	Max Output
225 amps	Infinite	CSA	250 amps