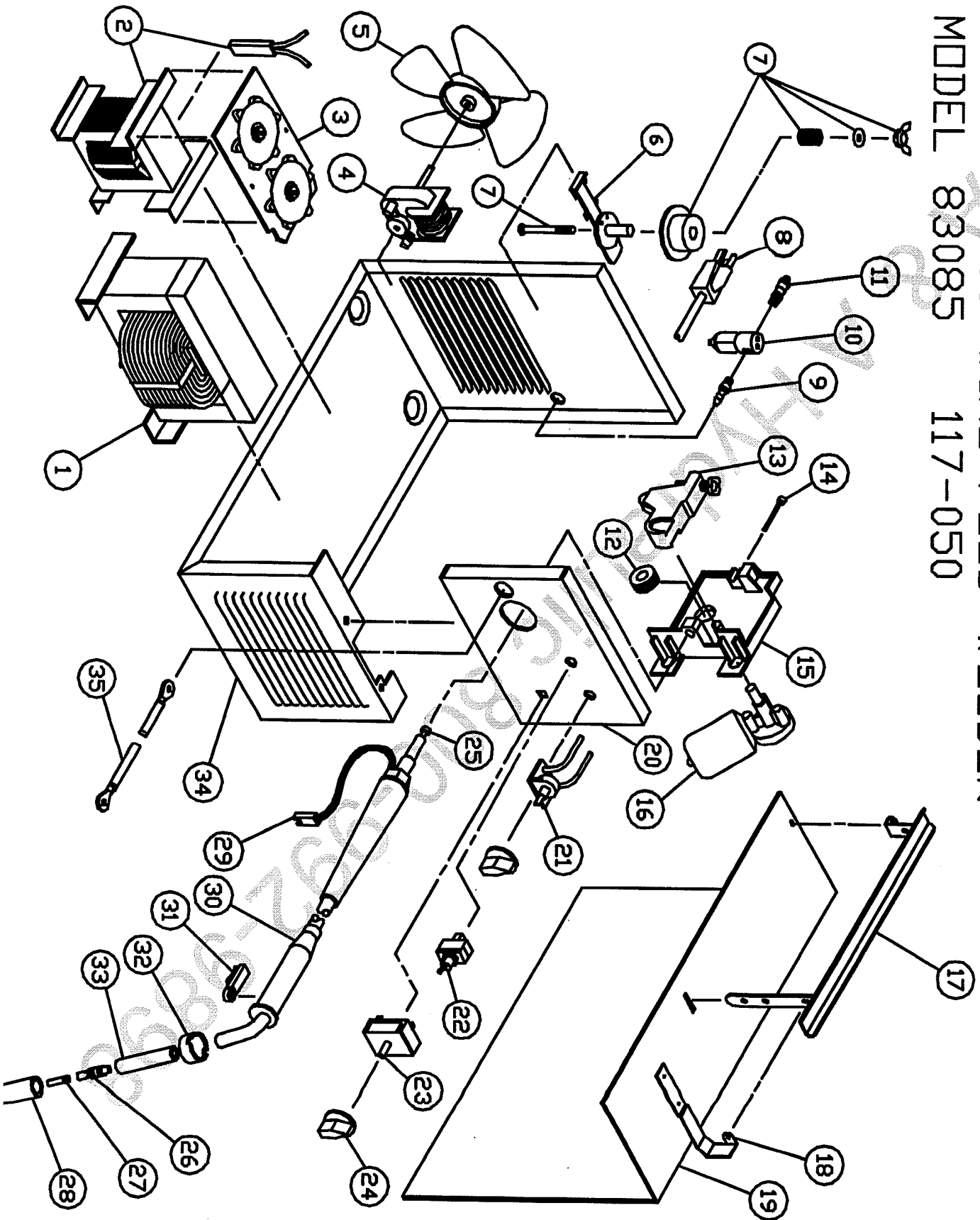


REPLACEMENT PARTS LIST  
CENTURY 100 WIRE FEED WELDER  
MODEL 83085 117-050

117-050, 2130, 20111, 83085, 6Z935B,C



# 117-050, 83085, 2130, 20111, 6Z935B,C 85 Amp

Item	Lincoln Stock #	Customer #	Description
1		880-185-888	Main weld transformer
2		880-184-888	Reactor Coil w/ thermostat
3		246-310-000	Thermostat only
4		860-905-666	Rectifier assembly
5		216-087-666	Fan motor
6		316-009-000	Fan blade
7		312-076-666	Wire spindle
8		131-419-000	Tension kit
9		248-197-000	Power cord
10		253-018-666	Fitting
11		246-212-666	Gas solenoid
12		253-038-000	Fitting
13		4323	Drive roller, 0.024 / 0.030 / 0.035
14		880-089-666	Tension arm only
15		312-107-000	Inlet guide tube
16		239-123-666	Quick release drive base assy. (Includes 13-15)
17		239-208-000	Drive Motor w/gearbox
18		216-089-666	Handle
19		880-012-010	Hood hinge
20		412-278-010	Right side panel
21		410-568-020	Front panel
		410-691-060	Wire speed control assy

Model	Primary Input	Input Plug	Duty Cycle at Rated Output
117-050	120V, 15 amp	15A	20%

Item	Lincoln Stock #	Customer #	Description
22		216-044-666	Toggle switch
23		246-057-666	Rate Switch
24		246-041-666	Knob
25		KP1937-1	Steel liner
26		KP1959-1	Teflon liner
27		334-228-000	Gas diffuser
28		334-203-000	0.024 Contact Tips
		43300, 334-210-300	0.030 Contact Tips
29		43300, 334-211-300	Steel welding nozzle
30		KP21-62	Aluminum welding nozzle
31		KP21-62-FAS	Spot welding nozzle
32		43290, 211-300	Gun trigger harness
33		860-744-000	10' Gun Assembly
34		238-155-000	Trigger
35		334-221-000	Handle Cap
36		334-219-000	Conductor tube insulation
37		334-269-000	Base
38		410-643-010	Ground cable
39		238-223-666	Ground clamp only
		41001	
		218-942-666	
		412-280-666	

Rated Output	Voltage Settings	Agency Listing	Max Output
85 amps	4	CSA	100 amps