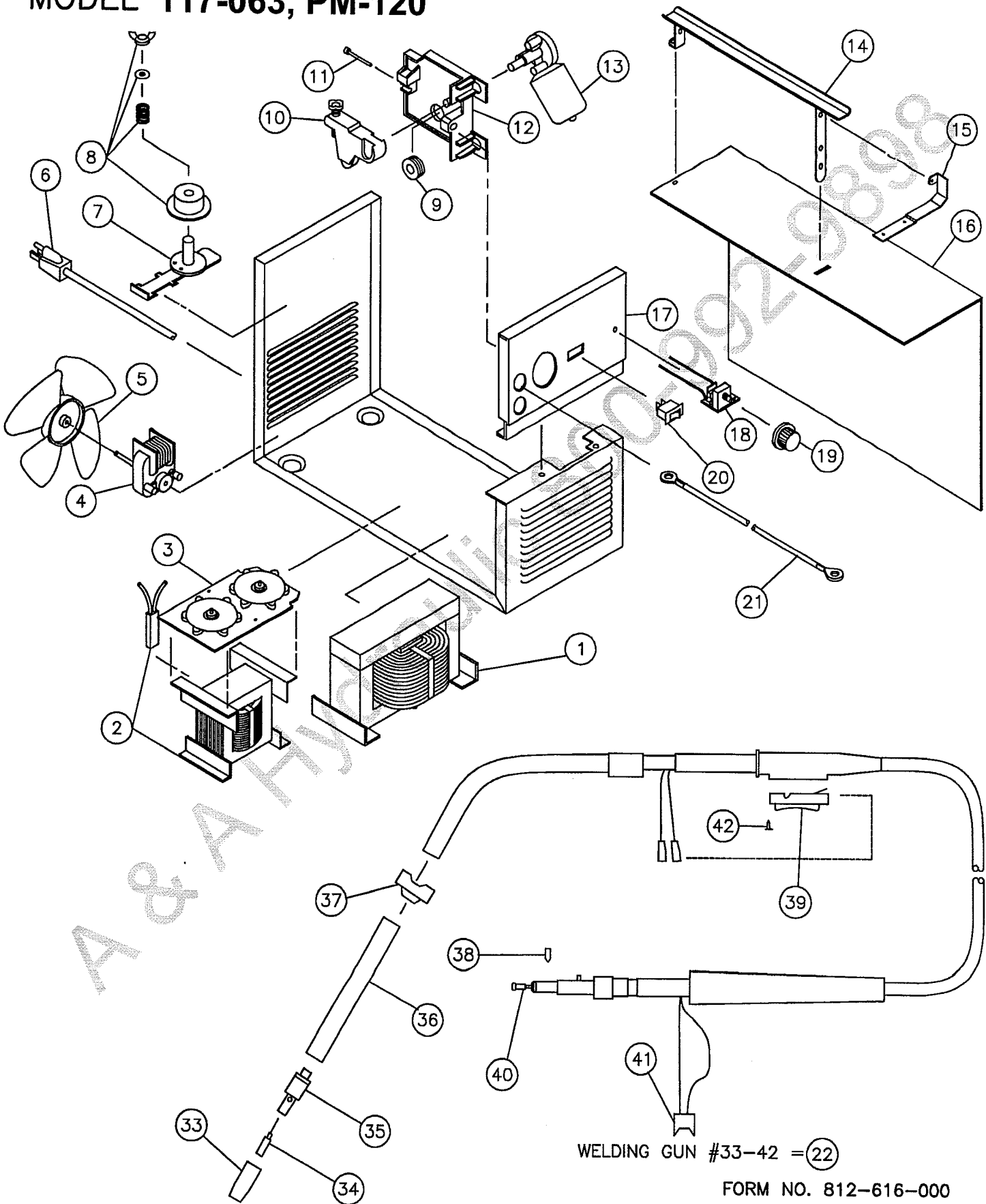


REPLACEMENT PARTS LIST
 CENTURY 80 AMP MIG
 MODEL 117-063, PM-120



WELDING GUN #33-42 = (22)

REPLACEMENT PARTS LIST

CENTURY 80 AMP MIG

MODEL PM-120, 117-063

ITEM	PART NO.	DESCRIPTION	ITEM	PART NO.	DESCRIPTION
1	880-356-888	TRANSFORMER ASSEMBLY	29	246-212-666	GAS SOLENOID (NOT SHOWN)
2	880-184-888	REACTOR ASSEMBLY	29	2139	WHEEL KIT (NOT SHOWN)
3	860-905-666	RECTIFIER ASSEMBLY	30	3730	.030 FLUXCORE WIRE #1 (NOT SHOWN)
4	216-087-666	FAN MOTOR	31	3728	.035 FLUXCORE WIRE #10 (NOT SHOWN)
5	316-009-666	FAN BLADE	32	4213	HELMET
6	248-197-666	POWER CORD	33		NOZZLES: STEEL WELDING (TAPERED)
7	312-076-666	WIRE SPINDLE			FOR STEEL WITH GAS:
8	131-350-001	TENSION KIT			STEEL WELDING (TAPERED)
9	4323	DRIVE ROLLER .024/.030/.035			FOR FLUX OR ALUMINUM W/GAS
10	880-089-666	DRIVE ROLLER .030/.035/.045	34	4330	ALUMINUM WELDING (STRAIGHT)
11	239-123-666	DRIVE TENSIONER ASSEMBLY		4329	SPOT WELDING (NOTCHED)
12	312-103-666	INLET GUIDE TUBE			CONTACT TIPS: (BAG OF 6)
13	216-089-666	DRIVE BASE W/NUT		4309	FOR .024 WIRE
14	880-012-010	DRIVE MOTOR		4310	FOR .030 WIRE
15	412-278-010	HANDLE WELD ASSEMBLY	35	334-228-000	GAS DIFFUSER
16	410-568-020	HOOD HINGE	36	334-217-000	INSULATION FOR CONDUCTOR TUBE
17	410-780-020	RIGHT SIDE PANEL	37	334-219-000	HANDLE CAP
18	880-094-666	FRONT PANEL	38	084-019-000	SET SCREW #8-32x1/8"
19	246-107-666	SPEED CONTROL ASSEMBLY	39	334-221-000	TRIGGER ASSEMBLY
20	246-177-666	CONTROL KNOB	40		LINERS FOR .016-.045 WIRE
21	238-223-666	SWITCH		4331	STEEL
22	238-224-100	CABLE ASSEMBLY		4325	PLASTIC
23	410-557-020	WELDING GUN 8' (SEE #33-42)	41	860-744-000	GUN WIRING HARNESS
24	410-575-030	LEFT SIDE PANEL (NOT SHOWN)	42		6-32x7/16" SCREW FOR TRIGGER
25	218-942-666	HOOD (NOT SHOWN)			HARDWARE
26	412-280-666	POLARITY JUMPER (NOT SHOWN)			(ITEM)
27	4100	GUN CONNECTOR (NOT SHOWN)			
		GROUND CLAMP ONLY (NOT SHOWN)			

SERVICING SHOULD BE PERFORMED BY QUALIFIED SERVICE PERSONNEL.