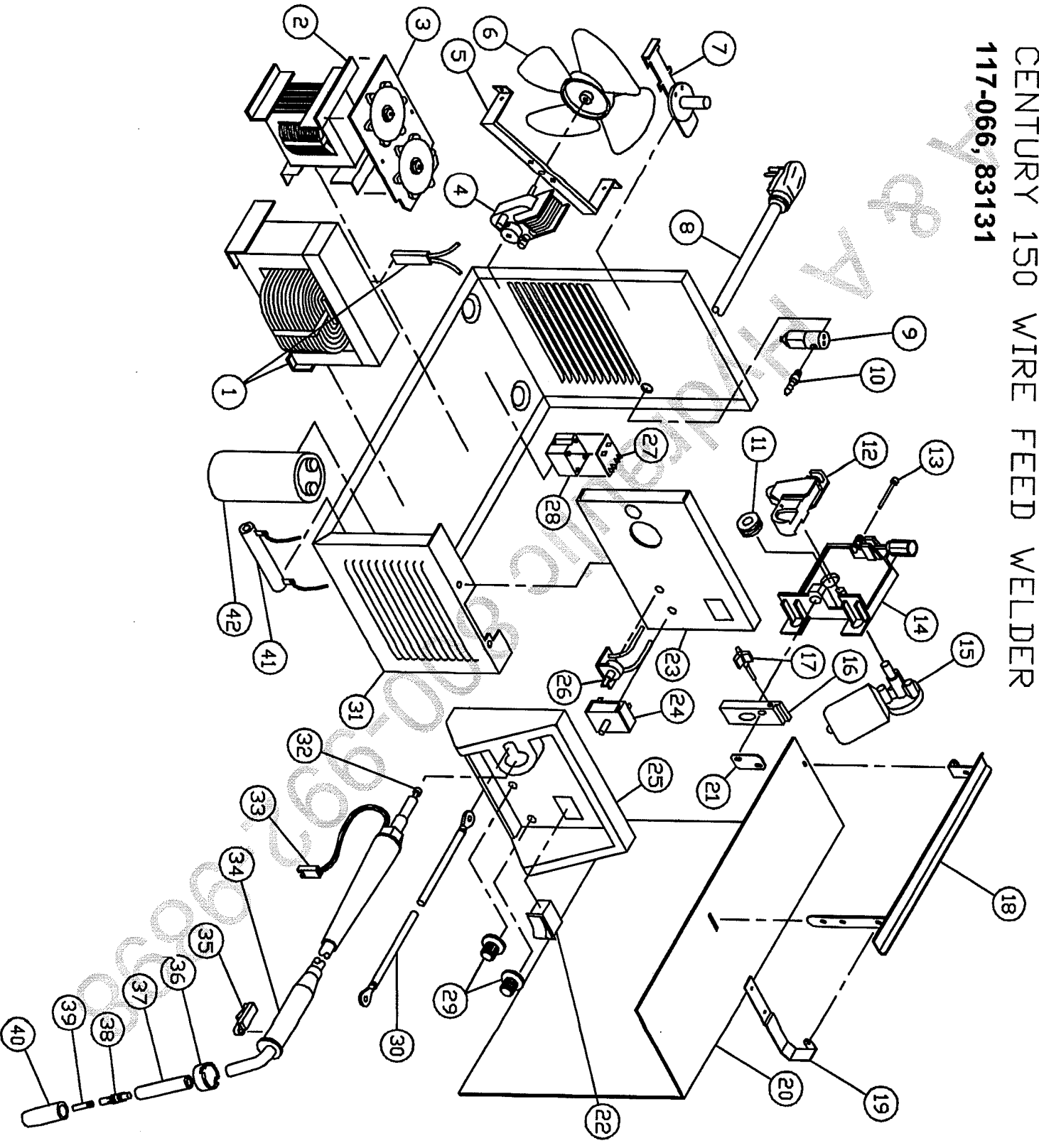


REPLACEMENT PARTS LIST
CENTURY 150 WIRE FEED WELDER
117-066, 83131



117-066 (83131), 150 Amp, 230V Mig

Item	Lincoln Stock #	Customer #	Description
1		880-317-888	Main weld transformer
		880-326-000	Thermal Breaker Assy.
2		880-323-888	Reactor Coil w/ thermostat
3		880-327-666	Dual sided rectifier assy.
4		216-092-666	Fan motor / drive transformer
5		412-375-666	Fan motor bracket
6		316-009-000	Fanblade
7		312-076-666	Spindle
8		248-282-666	Power cord
9		246-086-666	Gas solenoid
10		253-018-000	Fitting
		4323	Drive roller, 0.024 / 0.030 / 0.035
		4324	Roller for Aluminum
		4347,	0.045 Serrated roller
12		880-111-666, 312-107-000	Tension arm only
13		239-123-666, 239-208-000	Inlet guide tube
14		880-130-666	Drive base w/ tension arm
15		216-089-666	Drive motor
16		412-465-666	Mig Gun connector
17		246-326-000	Knob w/stud
18		880-012-010	Handle assembly
19		412-278-010	Hood hinge
20		410-568-020	Right side panel
21		412-464-666	Copper gun jumper
22		246-325-666	Rocker switch
23		410-642-010	Front panel
24		246-057-666	Rotary switch
25		312-178-000	Nose

Model	Primary Input	Input Plug	Duty Cycle at Rated Output
117-066	230V, 20 amp	20A	30%

Item	Lincoln Stock #	Customer #	Description
26	880-094-666	880-094-666	Wire speed control
27		880-318-000	Circuit board
28	216-055-666	216-055-666	Triac relay
29	246-041-666	246-107-000	Control knobs
30		238-069-666	Ground cable, 6 ga., 7' w/ lugs
31		410-639-010	Base
32	KP1937-1	4331	Steel liner
	KP1959-1	4325	Teflon liner
33		860-744-000	Gun wiring harness
34	238-155-000	238-155-000	10' Mig Gun
35	334-221-000	334-221-000	Trigger
36		334-219-000	Handle cap
37		334-269-000	Conductor tube insulation
38	334-228-000	334-228-000	Gas diffuser
39	KP2039-1B1	43090	0.024 Contact Tips (6)
	KP2039-2B1	43100	0.030 Contact Tips (6)
	KP2039-3B1	43110	0.035 Contact Tips (6)
40	334-203-000	43480	Standard Nozzle
41		860-523-000	Resistor
42		213-041-000	Capacitor
Not Shown			
43		334-217-000	Conductor tube insulation
44		334-219-000	Handle cap
45	334-221-000	334-221-000	Trigger
46		860-744-000	Trigger harness
47	131-419-000	131-350-001	Wire tensioner kit
48	334-303-001	334-286-666	Gas regulator
49	059-245-666		Gas hose

Rated Output	Voltage Settings	Agency Listing	Max Output
130 amps	4	CSA	150 amps