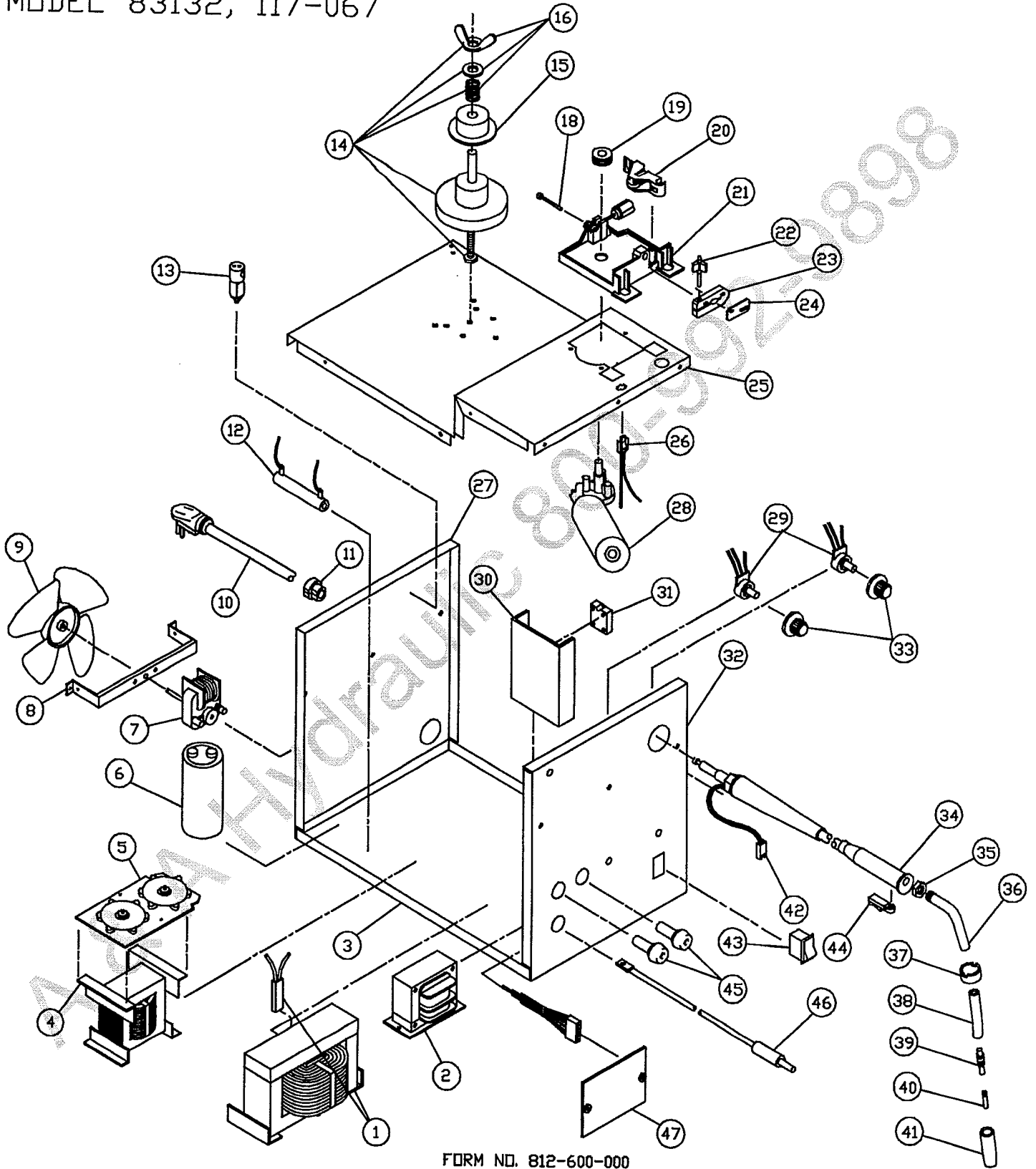


CENTURY 160 WIRE FEED WELDER 117-067-002, 83132,83133, 2160, M02160, WFW160
MODEL 83132, 117-067



FORM NO. 812-600-000
REV. D

117-067, 83132, 83133, 2160, 130 Amp Mig

Item	Lincoln Stock #	Customer #	Description
1		880-324-888 880-326-000	Main Transformer w/Thermal Thermal breaker only
2	880-041-888	880-041-888	Control Transformer, 230Vac to 24Vdc, 6 amp
3		410-755-000	Base
4		880-323-888	Reactor coil
5		880-327-666	Dual sided rectifier
6		213-041-000	Capacitor, 98,000mf, 40 Vdc
7	216-086-666	216-086-666	Fan Motor
8		411-072-666	Fan bracket
9		316-014-000, 316-009-000	Fan blade
10		248-282-666	Power cord
11		541-019-000	Bushing
12		860-523-666	Bleeder resistor
13	246-212-666	246-086-666	Gas solenoid, 24Vdc
14	312-066-666	312-066-666	Bolt, spindle, spring, washer & wing nut
15	312-110-666	312-110-666	Spool adapter
16	Order # 18	069-043-666	Spring, washer & wing nut
18		239-208-000	Inlet guide tube
19	310-122-500	4323	0.024/0.030/0.035 drive roller
		4347,	0.045 serrated drive roller
20		310-154-000	Tension arm only
21	880-130-666	880-130-666	Drive base w/ arm
22		246-326-000	Knob
23	412-465-666	412-465-666	Gun connector block
24		412-464-666	Copper Jumper
25		410-699-010	Drive deck
26		880-227-666	Gun wiring harness
27		410-757-010	Back panel
28	216-089-666	216-089-666	Drive Motor w/gearbox

Item	Lincoln Stock #	Customer #	Description
29		246-120-000	Potentiometer, 5K
30		412-134-100	Heatsink
31	216-055-666	216-055-666	Triac Relay, 40 amp, D2440
32		410-807-070	Front panel
33		246-140-666	Knob
34	238-155-000	4320	10' mig gun less tip & nozzle
35		334-220-000	Nut
36	334-227-000	334-227-000	Gooseneck
37		334-219-000	Handle cap
38		334-217-000	Insulation
39	334-228-000	334-228-000	Gas diffuser
40	KH710, KP2039-1B1	43090, 334-159-300	0.024 Contact Tips (6)
	KH711, KP2039-2B1	43100, 334-160-300	0.030 Contact Tips (6)
	KH712, KP2039-3B1	43110, 334-161-300	0.035 Contact Tips (6)
41	KH725, 334-203-000	43480, 334-203-300	Standard Nozzle
	KP1956-1	43290, 334-211-300	Spot Nozzle, Notched
42		860-744-000	Trigger harness
43		246-325-666	Switch
44	334-221-000	334-221-000	Trigger
45	312-045-666	312-045-666	Receptacle
46		238-320-666	Polarity Jumper
47	880-113-666	880-113-666	Circuit board
Not Shown			
48		410-323-110	Left side panel
49		410-326-110	Right side panel
50		410-327-020	Hood
51	334-303-001	334-286-666	Gas regulator
52	059-245-666		Gas hose
53	KH600	47330, 332-337-300	Welding helmet

Rated Output	Voltage Settings	Agency Listing	Max Output
130 amps	Infinite	CSA	160 amps

860-616-002
Composite Drive Roller