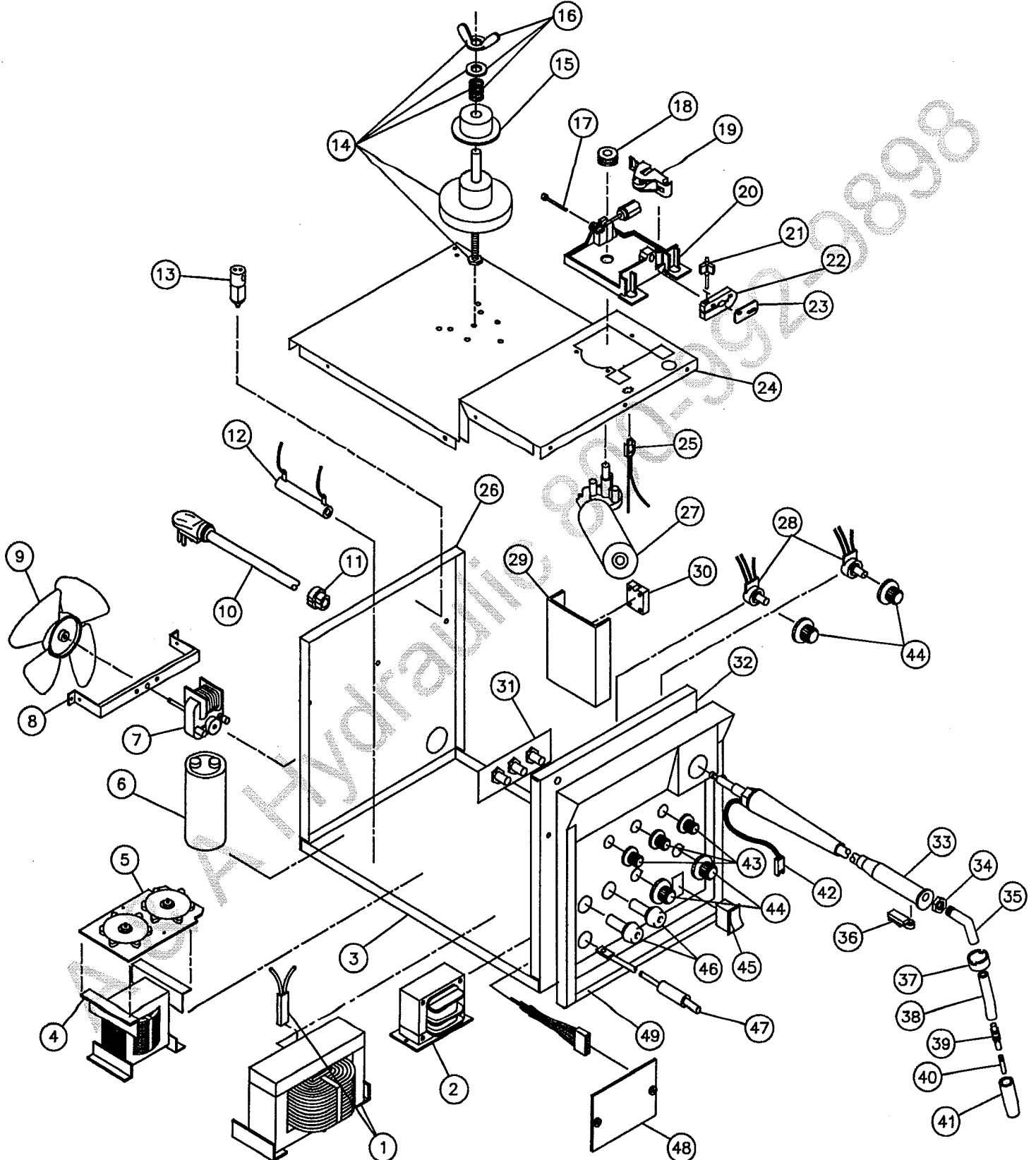


MATCO 160 AMP, 20% MIG WELDER
117-067-003, WFW160



FORM NO. 812-618-000
REV A

REPLACEMENT PARTS LIST

MATCO 160 AMP, 20% MIG WELDER

MODEL 117-067-003, WFW160

ITEM	PART NO.	DESCRIPTION
1	880-324-888	TRANSFORMER ASSEMBLY W/THERMAL BREAKER
	880-326-666	THERMAL BREAKER ONLY
2	880-233-888	DRIVE TRANSFORMER ASSEMBLY
3	410-755-000	BASE
4	880-323-888	REACTOR ASSEMBLY
5	880-327-666	DUAL SIDED RECTIFIER ASSEMBLY
6	213-041-666	CAPACITOR
7	216-086-666	FAN MOTOR
8	411-072-666	FAN MOTOR MOUNTING BRACKET
9	316-014-666	FAN BLADE
10	248-282-666	POWER CORD
11	541-019-000	BUSHING
12	860-523-666	RESISTOR ASSEMBLY
13	246-212-666	SOLENOID
14	312-066-666	BOLT, SPINDLE, SPRING, WASHER, & WING NUT
15	312-110-666	MOLDED ADAPTER SPOOL
16	069-043-666	SPRING, WASHER, & WING NUT
17	239-123-666	INLET GUIDE TUBE
18	4323	DRIVE ROLLER (.024, .030, .035)
	4347	DRIVE ROLLER (.045)
19	880-111-666	DRIVE TENSIONER ASSEMBLY
20	880-112-666	DRIVE BASE W/NUT
21	246-326-000	KNOB
22	412-465-666	MIG CONNECTOR BLOCK
23	412-464-666	POWER JUMPER
24	410-699-010	DRIVE DECK
25	880-227-666	WIRE GUN HARNESS
26	410-757-010	BACK PANEL
27	216-089-666	DRIVE MOTOR
28	245-108-666	POTENTIOMETER
29	412-134-100	HEATSINK
30	216-055-666	RELAY
31	880-114-666	SPOT STITCH PCB
32	410-831-010	FRONT PANEL
33	4320	COMPLETE GUN ASSEMBLY 10'
34	334-220-000	NUT
35	334-227-000	GOOSENECK
36	334-221-000	TRIGGER
37	334-219-000	HANDLE CAP
38	334-217-000	INSULATION
39	334-228-000	GAS DIFFUSER
40	4309	CONTACT TIPS, .024 (PKG. 6)
	4310	CONTACT TIPS, .030 (PKG. 6)
	4311	CONTACT TIPS, .035 (PKG. 6)
41	4348	NOZZLE, STD.
	4329	NOZZLE, SPOT
42	860-744-000	TRIGGER HARNESS
43	246-139-666	KNOB
44	246-140-666	KNOB
45	246-325-666	SWITCH
46	312-045-666	(1) RECEPTACLE ASSEMBLY
47	238-320-666	POLARITY JUMPER
48	880-113-666	PRINTED CIRCUIT BOARD
49	312-252-666	NOSE PANEL W/LABEL
50	410-323-110	SIDE PANEL, LEFT (NOT SHOWN)
51	410-326-110	SIDE PANEL, RIGHT (NOT SHOWN)
52	410-437-020	HOOD (NOT SHOWN)
53	334-285-666	GAS REGULATOR (NOT SHOWN)
54	4213	HELMET (NOT SHOWN)

SERVICING SHOULD BE PERFORMED BY QUALIFIED PERSONNEL.