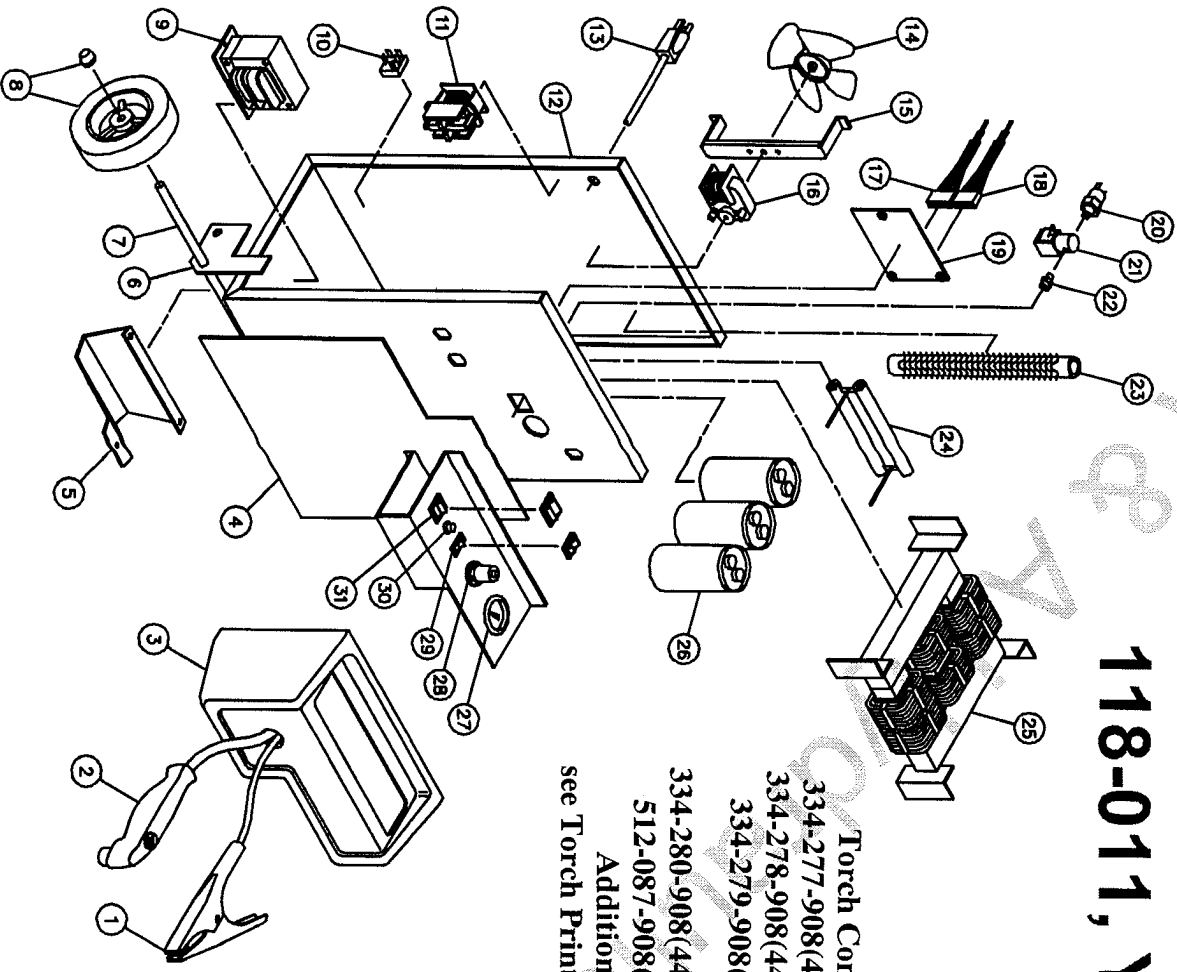


CONSUMABLES HAVE BEEN  
MANUFACTURE TESTED TO  
WORK WITH THE PRODUCT

# 118-011, YA2120

REPLACEMENT PARTS LIST  
SNAP-ON 120V PLASMA ARC CUTTER  
MODEL YA2120 118-011



**Torch Consumables:**  
 334-277-908(4420)Electrode  
 334-278-908(4422)Switch Ring  
 334-279-908(4421)Nozzle  
 334-280-908(4423)Nozzle Cap  
 512-087-908(4405)O-ring  
**Additional Parts:**  
 see Torch Print # 238-240-100

ITEM	DESCRIPTION	PART NUMBER
1	GROUND CABLE WITH CLAMP	238-244-666
2	CLAMP ONLY	239-010-102
3	TORCH	238-240-100
4	NOSE	312-092-666
5	FACEPLATE	711-160-036
6	FOOT	412-081-666
7	WHEEL MOUNTING BRACKET	412-284-016
8	AXLE	413-013-666
9	WHEEL AND HUB	413-042-666
10	CONTROL TRANSFORMER	880-106-888
11	RECTIFIER KIT	244-078-666
12	CONTACTOR	246-124-666
13	BASE	410-927-010
14	POWER CORD	248-211-666
15	FAN BLADE	316-009-666
16	FAN MOUNTING BRACKET	411-072-666
17	FAN MOTOR	216-087-166
18	10-PIN WIRE HARNESS	880-103-666
19	PRINTED CIRCUIT BOARD	880-023-666
20	GAS SOLENOID	880-102-666
21	PRESSURE SWITCH	252-003-666
22	NYLON ADAPTOR	246-086-666
23	RESISTOR 2.0, 420 W	253-069-666
24	RESISTOR ASSEMBLY	245-105-666
25	TRANSFORMER	880-104-666
26	CAPACITOR	880-107-888
27	PRESSURE GAUGE	213-034-666
28	PLASMA REGULATOR	251-003-666
29	RUN/SETUP SWITCH WITH COVER	254-003-666
30	INDICATOR LIGHT	246-214-666
31	POWER SWITCH WITH COVER	243-109-666
32	HANDLE (NOT SHOWN)	246-213-666
33	COVER (NOT SHOWN)	412-285-116
		410-585-036

SERVICING SHOULD BE PERFORMED BY QUALIFIED SERVICE PERSONNEL.