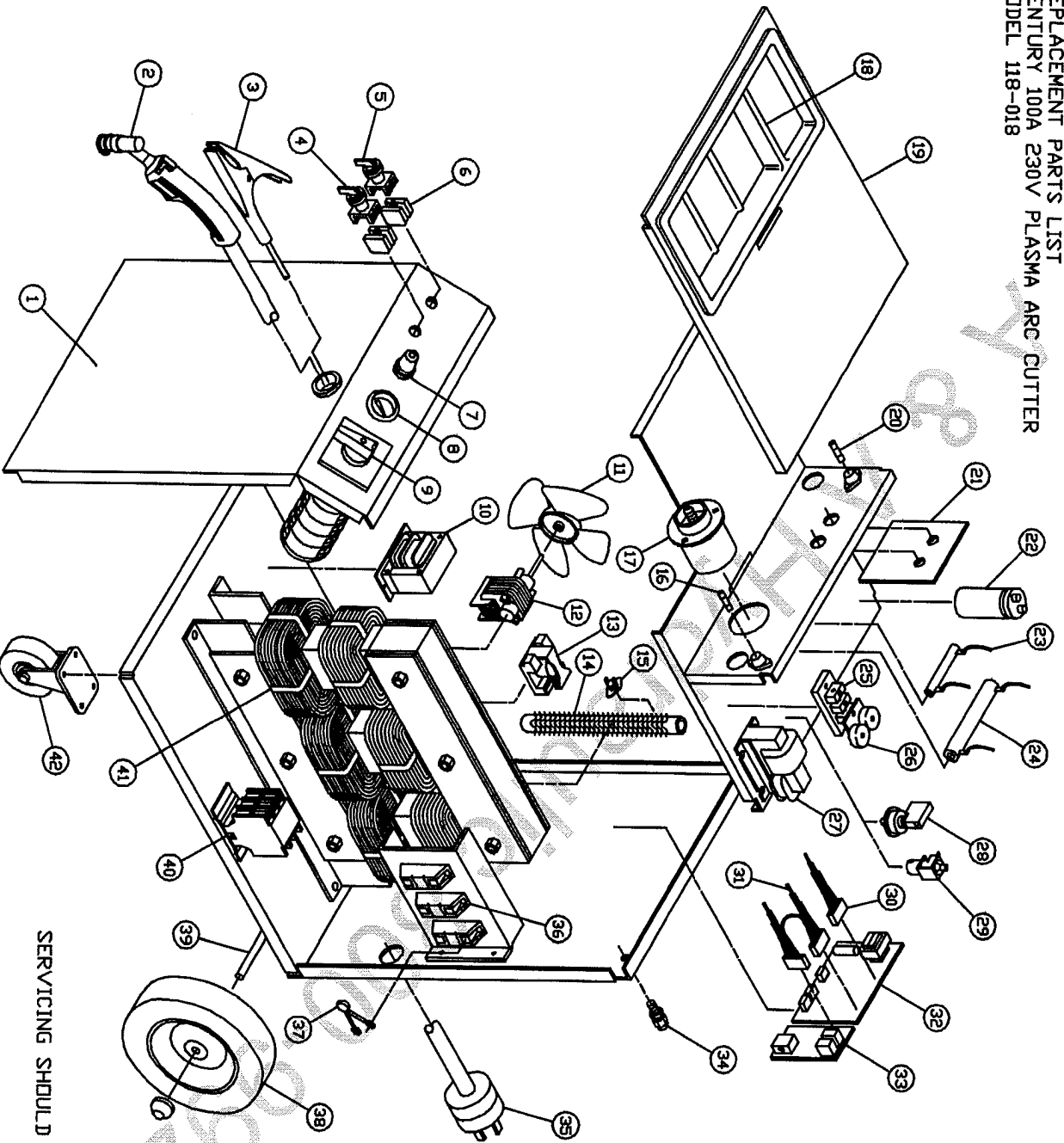


REPLACEMENT PARTS LIST
CENTURY 100A 230V PLASMA ARC CUTTER
MODEL 118-018



ITEM	DESCRIPTION	PART NUMBER
1	FRONT PANEL	743-213-666
2	HAND HELD TORCH ASSEMBLY, 25 FT 180° MACHINE TORCH ASSEMBLY (SEE FORM NO. 812-494-000 FOR INDIVIDUAL TORCH PARTS)	238-304-001 334-392-100 334-315-100
3	GROUND CABLE WITH CLAMP	238-305-666
4	CLAMP ONLY	239-010-102
5	RUN/SETUP SWITCH	246-251-666
6	POWER SWITCH	246-247-666
7	CONTACT AND	246-252-666
8	CONTACT AND	246-253-666
9	CONTACT AND	245-119-666
10	LIGHT ASSEMBLY W/BULB	254-005-666
11	AIR REGULATOR	251-003-666
12	PRESSURE GAUGE	246-246-666
13	RATE SELECTOR SWITCH W/KNOB	246-265-666
14	CONTROL TRANSFORMER	880-199-898
15	FAN BLADE	316-007-666
16	FAN MOTOR	216-088-666
17	PILDT ARC RELAY	246-255-666
18	PILDT ARC RELAY	245-100-666
19	THERMAL BREAKER	216-073-666
20	5 AMP FUSE	245-120-666
21	COUPLING COIL	880-205-666
22	TOP PANEL	312-130-666
23	4 AMP FUSES (PKGS OF 3)	743-820-666
24	INPUT/OUTPUT CIRCUIT BOARD	245-116-666
25	CAPACITOR	880-208-666
26	5 OHM RESISTOR	213-028-666
27	500 OHM RESISTOR	860-853-666
28	SPARK BLOCK WITH POINTS	880-210-666
29	PILDT CAPACITORS	512-101-666
30	HI-VOLTAGE TRANSFORMER	213-029-666
31	AIR SAFETY SWITCH	880-202-666
32	AIR SOLENOID	246-254-666
33	WIRE HARNESS	246-166-666
34	MAIN CIRCUIT BOARD	880-195-666
35	PILDT ARC CIRCUIT BOARD	880-962-666
36	PORT FITTING WITH NUT	880-209-666
37	RECTIFIER	253-089-666
38	WHEEL WITH HARDWARE	248-221-666
39	WHEEL WITH HARDWARE	244-085-666
40	CONTACTOR	880-077-666
41	MAIN TRANSFORMER	413-032-666
42	CASTERS (2) WITH HARDWARE	413-054-666
43	RIGHT SIDE PANEL (NOT SHOWN)	410-632-016
44	LEFT SIDE PANEL (NOT SHOWN)	410-633-016
45	HANDLE (NOT SHOWN)	412-357-666
46	LIFTING RING (NOT SHOWN)	412-360-016

SERVICING SHOULD BE PERFORMED BY QUALIFIED SERVICE PERSONNEL.

118-018, 82100

FORM NO. 812-496-000
REV. B