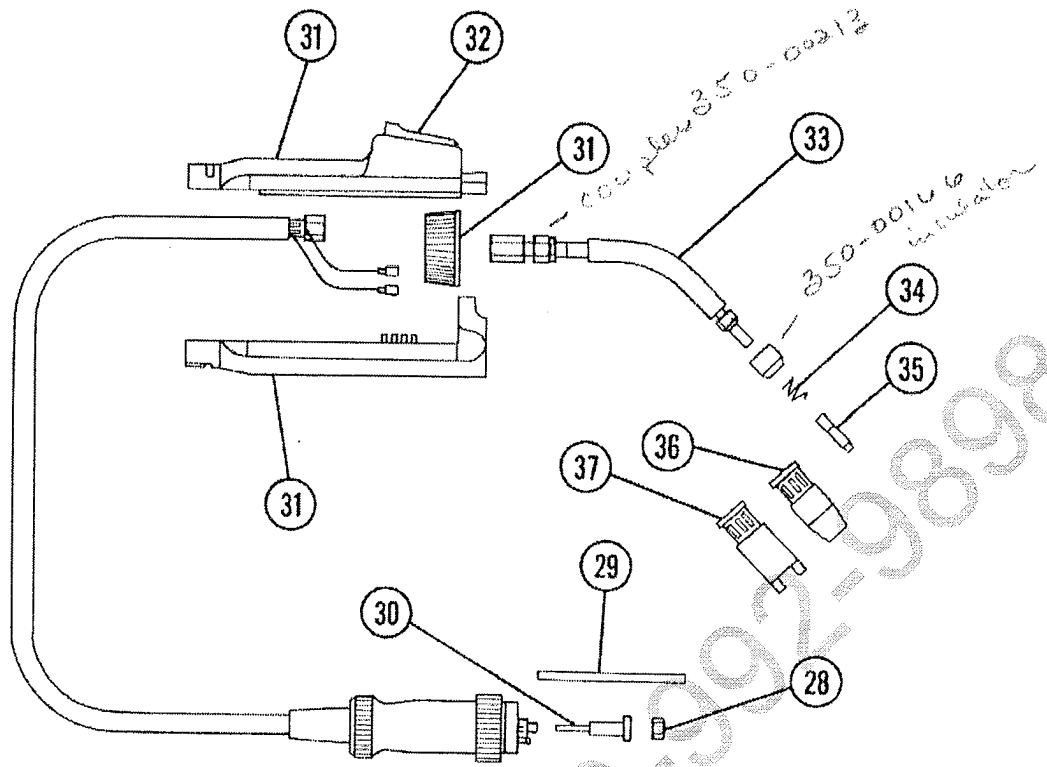


REPAIR PARTS LIST

Code No.	Part No.	Description	No. Req'd
1	35000149 35000154	Knob Assembly, Small Control Potentiometer, 200K Linear (Not Shown)	3
2	35000126	Knob, Main Switch	3
3	35000150	Knob Assembly, Wire Feed Control	1
3a	35000153	Potentiometer, 100K Linear, (Not Shown)	1
4	35000156	Power Light	1
5	35000152	Weld Selector Switch	1
6	35000151	Gas Selector Switch	1
7	35000124	Choke Coil	1
8	35000145	Control Module, Complete w/Circuit Board	1
8a	35000146 35000146W	Circuit Board for Module (New) Circuit Board for Module (Exchange)	1
9	35000121	Capacitor 47000 mfd 40V.	1
10	35000125	Power/Heat Switch	1
11	35000129	Control Circuit Transformer	1
12	35000128	Main Relay	1

Code No.	Part No.	Description	No. Req'd
13	35000132	Gas Solenoid Valve	1
14	35000123	Main Transformer	1
15	35000119	Rectifier Bridge - Single Phase	1
16	35000120	Discharge Resistor	1
17	35000100	Wire Feed Motor (110 RPM)	1
18	35000110	Knurled Nut	1
19	35000108	Wire Drive Pressure Wheel Assembly	1
20	35000116	Wire Tension Spindle	1
20a	21200181	Spacer for 12.5# Spool	1
21	35000092	Caster Wheels Front Swivel	2
22	35000090	Rear Wheels	2
23	35000089	Gas Cylinder Holder (Lower) w/o Wheels	1
24	35000097	Ground Cable, Complete	1
25	35000087	Gas Cylinder Holder (Upper)	1
26	35000084	Handle	1
27	35000091	Hubcap - Startlock	2

12-160, 83-310, 98161



334-644-000 (M15193), 10' Mig Gun

REPAIR PARTS LIST

NUMERICAL PARTS LISTING

Code No.	Part No.	Description	No. Req'd
28	35000183	Collet Nut for Liner	1
29	411-123-666	Teflon Liner w/ Collet	1
30	411-121-666	Steel Liner	1
31	35000170	Handle Grip, Complete	1
32	35000175	Trigger Switch	1
33	35000168	Swan Neck 45°	1
34	35000165	Nozzle Spring	1
35	15524/98179	Contact Tip 1.0 mm (.035 in.) (Pkg. of 10)	1
	15523/98178	Contact Tip 0.8 mm (.030 in.) (Pkg. of 10)	1
	15522/98176	Contact Tip 0.6 mm (.023 in.) (Pkg. of 10)	1
36	15520/98177	Taper Nozzle	1
37	15521/98180	Spot Weld Nozzle	1
†	15541	Power Extension Plug	1
†	47900003	Strain Relief Bushing for Plug	1
†	15540	Weld Receptacle	1
†	90700160	Pin for Punching Tool	1
†	35000197	Heat Shrink Rod	1
†	61085920	Instruction Decal (Marquette)	1
†	61985884	Instruction Decal (Blackhawk)	1
†	61985921	Instruction Decal (NAPA)	1
†	35000204	Cabinet Complete (Marquette)	1
†	35000205	Cabinet Complete (Blackhawk)	1
†	35000206	Cabinet Complete (NAPA)	1
†	35000207	Right Hand Side Panel (Marquette)	1
†	35000208	Right Hand Side Panel (Blackhawk) <i>Steel</i>	1
†	35000209	Right Hand Side Panel (NAPA) <i>Steel</i>	1
†	35000210	Left Hand Side Panel (Marquette)	1
†	35000211	Left Hand Side Panel (Blackhawk)	1
†	35000212	Left Hand Side Panel (NAPA)	1

Part No.	Code No.	Part No.	Code No.
15520	36	35000123	14
15521	37	35000124	7
15522	35	35000125	10
15523	35	35000126	2
15524	35	35000128	12
98176	36	35000129	11
98177	36	35000132	13
98178	35	35000145	8
98179	35	35000146	8a
98180	37	35000146W	8b
21200181	20a	35000149	1
35000084	26	35000150	3
35000087	25	35000151	6
35000089	23	35000152	5
35000090	22	35000153	3a
35000091	27	35000154	1a
35000092	21	35000156	4
35000097	24	35000165	34
35000100	17	35000168	33
35000108	19	35000170	31
35000110	18	35000175	32
35000116	20	35000183	28
35000119	15	35000185	30
35000120	16	35000186	29
35000121	9		

† Not Shown

12-160, 83-310, 98161

Accessory Items Which Are Available Through Normal Distribution

MARQUETTE	BLACKHAWK	DESCRIPTION
15-173	98175	Welding Torch Assembly, Complete
—	98149	Nail Welding Nozzle
15-528	98162	Accessory Package
15-526	98167	Anti-Spatter Spray
15-525	98163	Gas Regulator
15-529	98148	.030 Steel Welding Wire, 12.5# Spool
15-527	98169	.023 Steel Welding Wire, 12.5# Spool
15-533	98158	.030 Type 4043 Aluminum Wire
15-534	98159	.030 Type 5356 Aluminum Wire
—	98157	Welding Nails (Pkg. 500)

Applied Power Inc.
Automotive Division
P.O. Box 27207
Milwaukee, Wisconsin 53227
(414) 321-7000

12-160, 83-310, 98161

